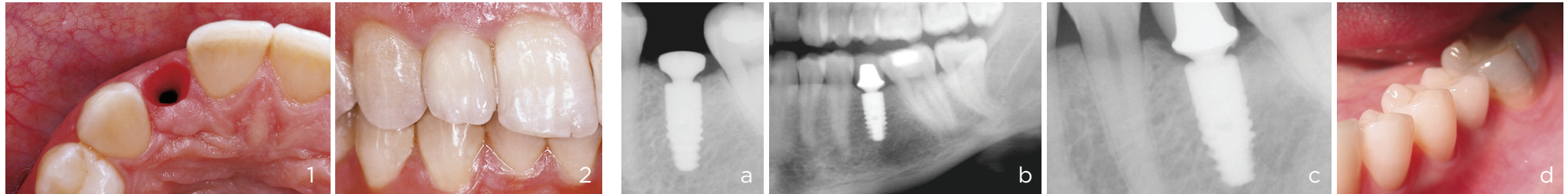


**Naturally beautiful teeth, even after many years, thanks to the esthetics-supporting advantages of Ankylos**

Long-term stable tissues thanks to the TissueCare Connection, designed to be micro-movement-free and bacteria-proof



Irritation-free, healthy soft tissues prior to incorporating the definitive restoration.

Natural soft tissue contour thanks to the TissueCare Connection

(Photographs 1-2: Dr. Eduard Eisenmann, Berlin, Germany)

Stable peri-implant hard and soft tissues after uncovering.

24 months post prosthetic restoration.

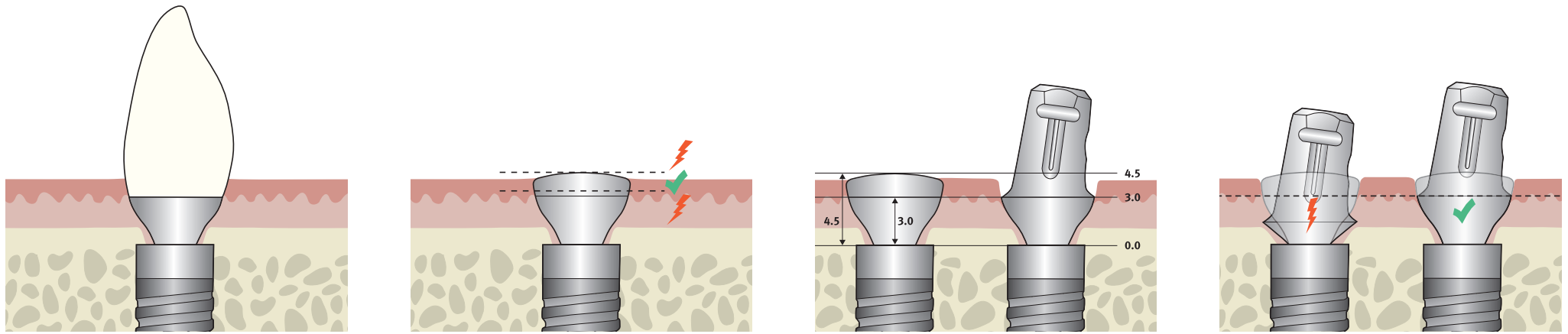
48 months post prosthetic restoration.

Clinical situation.

(Photographs a - d: Dr. Nigel Saynor, Cheshire, UK)

The gingiva former and final abutment should be selected so that they correspond in prosthetic range and gingival height.

	Gingiva former, Order No.	Gingival height (GH)	Diameter	Suitable abutments	
	<b>Ankylos Standard C/ Sulcus Former compact (a)</b> 3102 1011/ 3102 1021/ 3102 1026/ 3102 1028	15/ 3.0/ 4.5/ 6.0	3.3 mm	Standard Abutment (a) and Snap Attachment	
	<b>Ankylos Standard C/ Sulcus Former compact (b)</b> 3102 1031/ 3102 1041	15/ 3.0	4.5 mm	Standard Abutment (b)	
	<b>Ankylos Balance Anterior C/ Sulcus Former (small)</b> 3102 1510 (screw: 3102 1505) 3102 1515 (screw: 3102 1507)	15 3.0	5.5 mm	Balance Anterior (small) and Cercon Balance (small) Abutments	
	<b>Ankylos Balance Anterior C/ Sulcus Former (large)</b> 3102 1520 (screw: 3102 1505) 3102 1525 (screw: 3102 1507)	15 3.0	7.0 mm	Balance Anterior (large) and Cercon Balance (large) Abutments	
	<b>Ankylos Balance Posterior C/ Sulcus Former</b> 3102 1528/ 3102 1530/ 3102 1535/ 3102 1540	0.75/ 15/ 3.0 / 4.5	5.8 mm	Balance Posterior and Balance Base Abutments C/ (5.5 mm diameter)	
	<b>Ankylos C/ D 4.2 Gingiva Former</b> 3102 2510/ 3102 2512/ 3102 2514/ 3102 2516	0.75/ 15/ 3.0/ 4.5	4.2 mm	SynCone and Balance Base Abutments C/ narrow (4.2 mm diameter)	
	<b>Ankylos Regular C/X Gingiva Former</b> 3102 4010/ 3102 4012/ 3102 4014/ 3102 4016	0.75/ 15 / 3.0/ 4.5	5.9 mm	Regular Abutments	



- Due to the taper connection, the diameter of the Ankylos abutments on the implant level is markedly smaller than the diameter of the implant itself.
- Soft tissues are also located under the flanks of the abutment.
- That is why some special characteristics have to be considered for soft tissue contouring and the final choice of the abutment.

- The diagram shows the correct usage of a gingiva former.
- If the gingival level lies in the area between the two dotted lines, the correct gingiva former has been selected.
- If the level is above the upper dotted line, a higher gingiva former should be selected; if it is below the lower dotted line, a lower gingiva former should be selected.

- The gingiva former and final abutment should be selected so that they correspond in prosthetic range and gingival height.
- The description of the height of the gingiva former such as that shown above (GH 3.0) only refers to the region from the interface level to the edge of the crown.
- The entire gingiva former is always approximately 1.5 mm higher than the nominal height, viewed from the interface level (here: overall height 4.5 mm), in order also to shape the first part of the crown profile.

If the soft tissue passage formed is smaller than the profile of the abutment used, this may result in an avoidable compression of the gingiva.

This effect occurs when:

1. the gingiva former is markedly higher than the gingival level and the abutment used later on.
2. the gingiva former is suitable to the gingival height, but the gingival height of the final abutment is lower than that of the gingiva former used (see illustration).
3. the final abutment has a larger diameter than the gingivaformer used (e.g. different prosthetic range)

#### Advantages of the Ankylos system:

1. Provides adequate space for healthy, protective soft tissues.
2. Protects thin areas of soft tissue.
3. Prevents the potential visibility of the abutment through the tissues.
4. Ensures optimal esthetic results.